

Sign in

Sign In to order data

ZOOM TO LOCATION

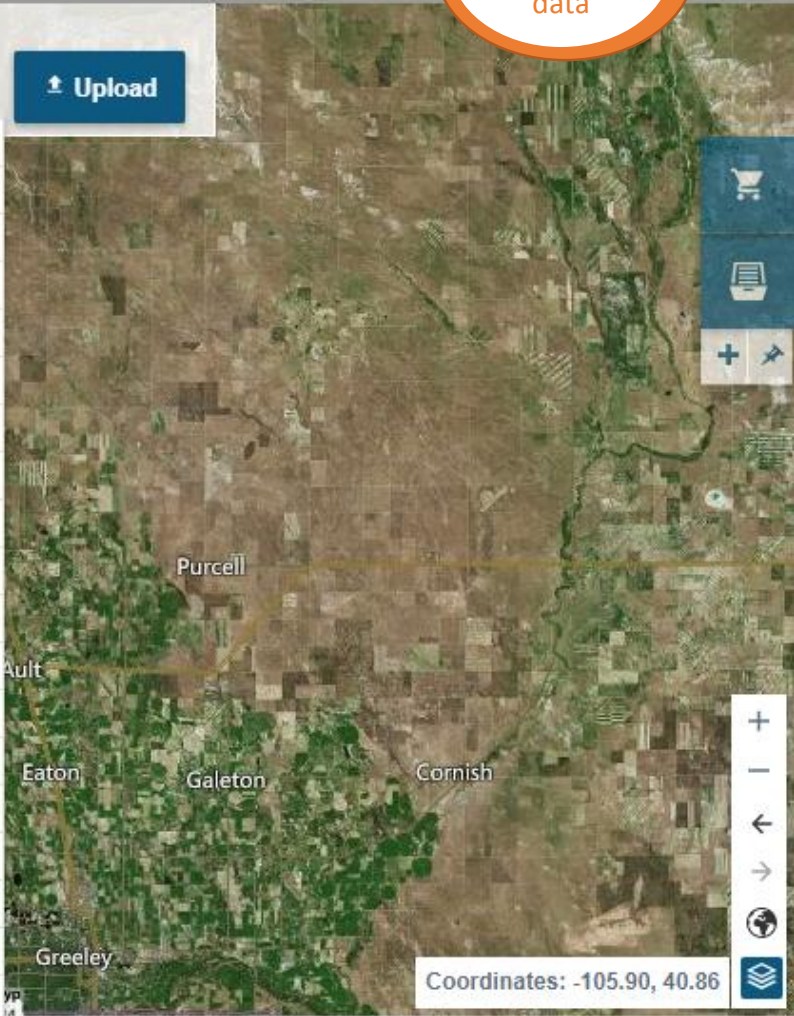
FILTERS

DEFINE AOI

- Fort Collins**
- Fort Collins, Larimer County, Colorado, United States, North America
- Fort Collins, Colorado, United States, North America
- Fort Collins County, Florida, United States, North America
- Fort Collins, Louisiana, United States, North America
- Fort Collins, Arkansas, United States, North America
- Vieux Fort, Vieux Fort, Saint Lucia, North America
- Fort-de-France, Fort-de-France, Martinique, North America
- Fort William, Fort William, United Kingdom, Europe
- City of Fort Collins, City of Fort Collins, Larimer County, Colorado, United States, North America
- Fort-Shevchenko, Fort-Shevchenko, Kazakhstan, Asia
- Wrangell, Wrangell, Wrangell City and Borough County, Alaska, United States, North America
- Fort McPherson, Fort McPherson, Canada, North America
- Fort Collins-Loveland Municipal Airport**, Fort Collins-Loveland Municipal Airport, Larimer County, Colorado, United States, North America
- Fort Meade, Fort Meade, Anne Arundel County, Maryland, United States, North America
- Collins, Collins, Covington County, Mississippi, United States, North America
- Wallington, Wallington, United Kingdom, Europe
- Kyzylorda, Kyzylorda, Kazakhstan, Asia
- Collins, Collins, Tattnall County, Georgia, United States, North America
- Collins, Collins, Huron County, Ohio, United States, North America

In the main search input, search for your favorite location by name (ex: Paris) or geographical coordinates (ex: 2.34,48.86). You can even enter a given scene ID.

1



ZOOM TO LOCATION

FILTERS

Products Criterias

DEFINE AOI

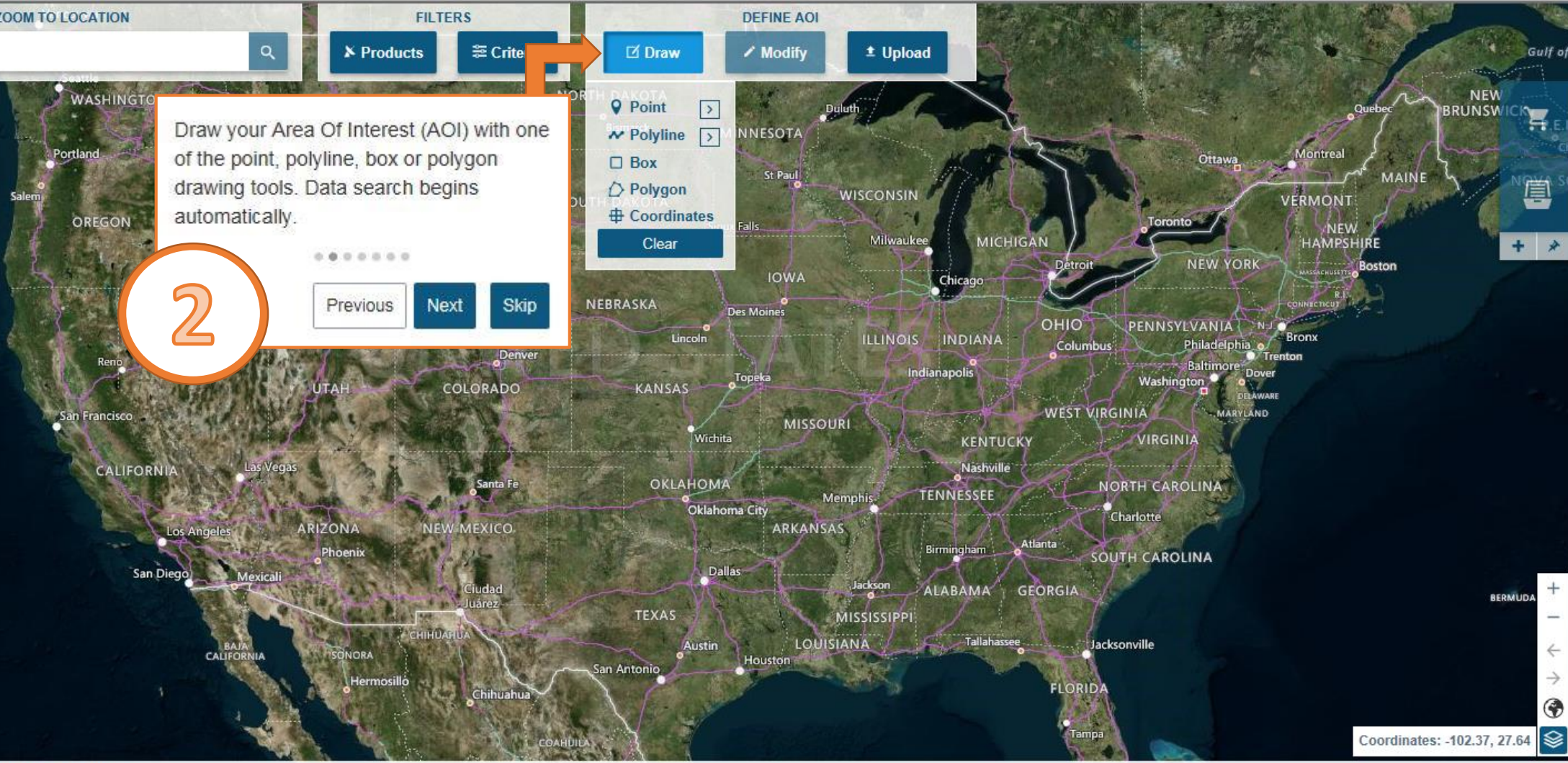
Draw Modify Upload

Draw your Area Of Interest (AOI) with one of the point, polyline, box or polygon drawing tools. Data search begins automatically.

2

Previous Next Skip

- Point
  - Polyline
  - Box
  - Polygon
  - Coordinates
- Clear



500 km

Coordinates: -102.37, 27.64

ZOOM TO LOCATION

FILTERS

[Products](#) [Criteria](#)

DEFINE AOI

[Draw](#) [Modify](#) [Upload](#)

You can also upload your AOI with a Shape or a KML file.

Previous Next Skip

3

Select Import Data Type

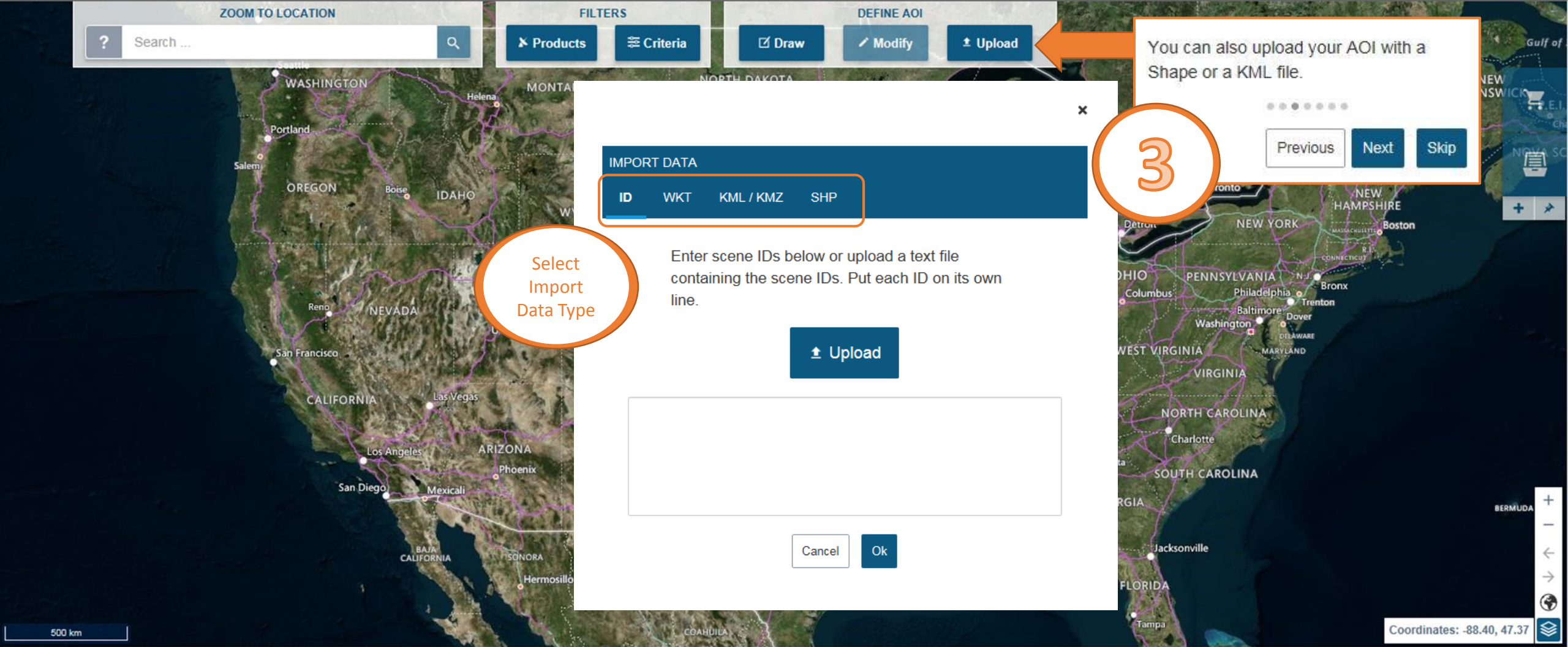
IMPORT DATA

ID	WKT	KML / KMZ	SHP
----	-----	-----------	-----

Enter scene IDs below or upload a text file containing the scene IDs. Put each ID on its own line.

[Upload](#)

Cancel Ok



ZOOM TO LOCATION

FILTERS

DEFINE AOI

[Products](#) [Criteria](#) [Draw](#) [Modify](#) [Upload](#)

Refine the searched products amongst the ones you have access to.

4

Previous Next Skip

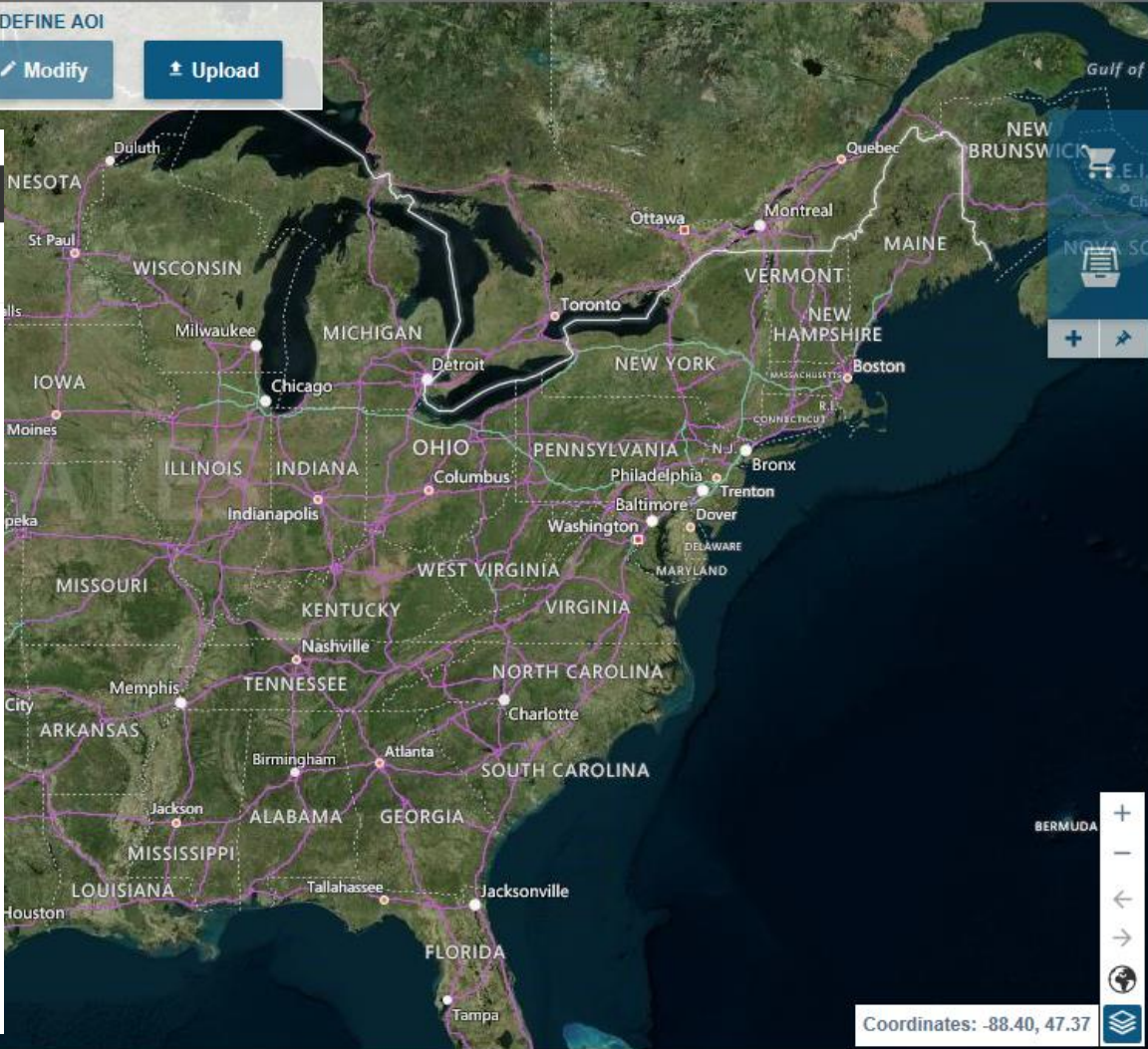
Check the Boxes to Select Products

Products

Select All

i-cubed 114/ 126

- 10m NED - National Elevation Dataset
- 30m NED - National Elevation Dataset
- ASTER GDEM v2
- BLM 100K Hillshaded Maps
- BLM 100K maps
- Canadian Digital Elevation Data, 90m
- eDEM Alaska
- eDEM Continental US
- eDEM Hawaii
- eDEM Puerto Rico
- eDOQQ 1-meter
- eDOQQ 8-meter mosaic
- eSAT15 Eco-Modified
- eSAT15 Eco-Modified Hillshaded
- eSAT15, Iraq and Kuwait



Coordinates: -88.40, 47.37

ZOOM TO LOCATION

Search ...

FILTERS

Criteria

Draw

Modify

Upload

DEFINE AOI

5

Refine your search criteria: acquisition date, incidence angle, cloud cover, etc.

Previous Next Skip

Search Criteria

Acquisition Range: Single, Begin: 2010-01-01, End: 2017-12-19

Resolution (m): 0 - 40 m

Incidence Angle (°): 0 - 20 °

Optical Criteria

Cloud Cover (%): 0 - 25 %

Snow Cover (%): 0 - 10 %

Cancel Restore default OK

Use the boxes to enter values

December 2017

Sun	Mon	Tue	Wed	Thu	Fri	Sat
26	27	28	29	30	01	02
03	04	05	06	07	08	09
10	11	12	13	14	15	16
17	18	19	20	21	22	23
24	25	26	27	28	29	30
31	01	02	03	04	05	06



ZOOM TO LOCATION

FILTERS

Products Criteria

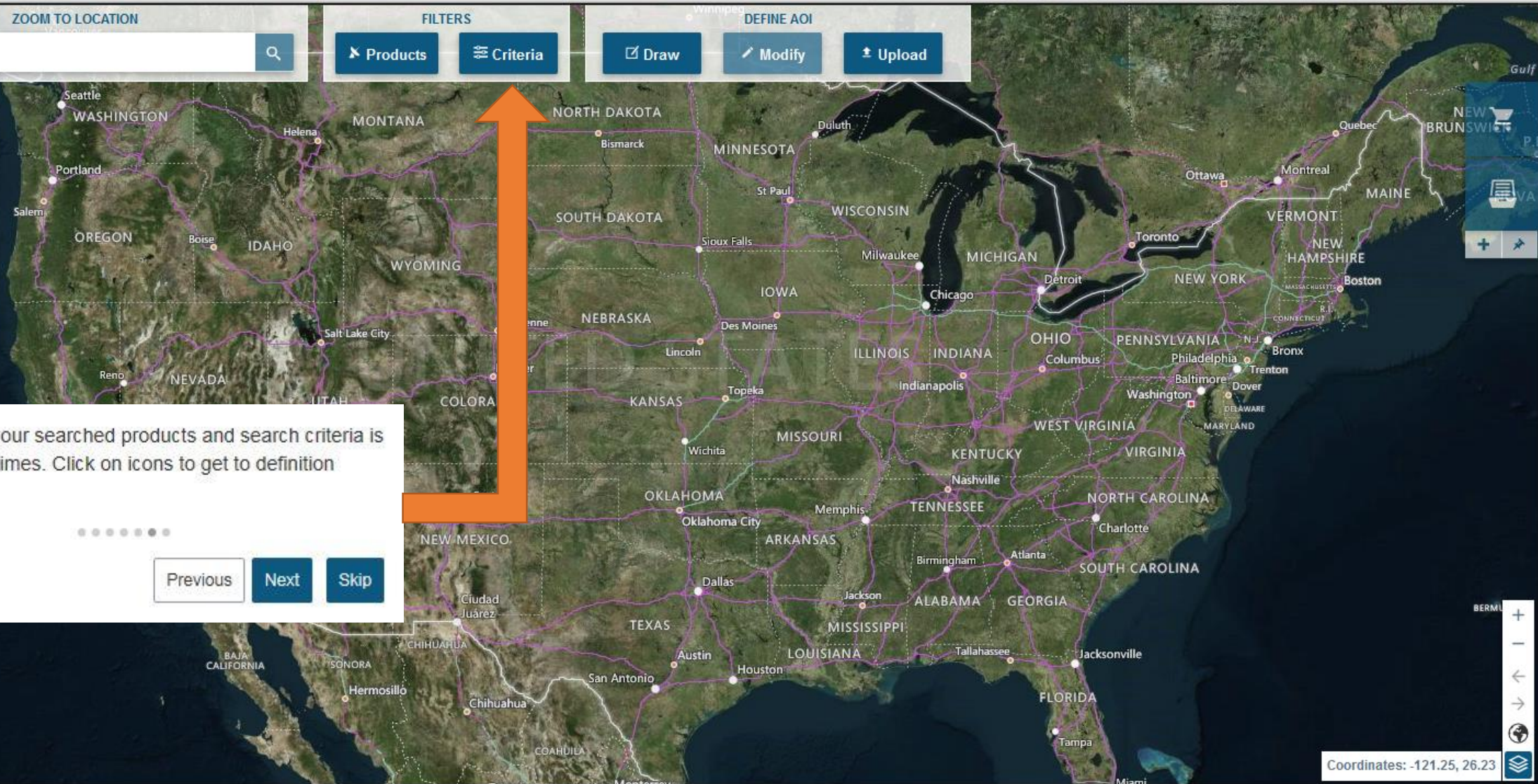
DEFINE AOI

Draw Modify Upload

A summary of your searched products and search criteria is available at all times. Click on icons to get to definition windows.

Previous Next Skip

6



ZOOM TO LOCATION

Search ...

FILTERS

Products Criteria

DEFINE AOI

Draw Modify Upload

Active polygon Polygon 1

Polygon 1 : 25 km<sup>2</sup>

Coordinates: -105.11, 40.59

### Mosaics Results

eTOPO 24K hillshaded maps Res: 2.4m		Optical results			
eTOPO 250K hillshaded maps Res: 25.0m		Mosaics			
i3highres 2010 30cm HiRes ortho-mos Res: 0.3m		Terrain results			
eSAT World, Stretched Version Res: 15.4m					
eTOPO 100K maps Res: 10.0m					
eTOPO 24K maps Res: 2.4m					
eTOPO 250K maps Res: 25.0m					
MODIS BMNG Bathymetry 200407 Res: 15.4m					
MODIS BMNG 200407 Res: 15.4m					
National Land Cover Data 1992 Res: 30.9m					
eDOQQ 1-meter Res: 1.0m					

7

Select products to add to cart from the Optical, Mosaics, or Terrain tabs.

Show Optical (only) product previews by clicking on the image icon.

Pin the Optical image preview to the screen to ensure your area of interest is covered

ZOOM TO LOCATION  
? Search ...

FILTERS  
Products Criteria

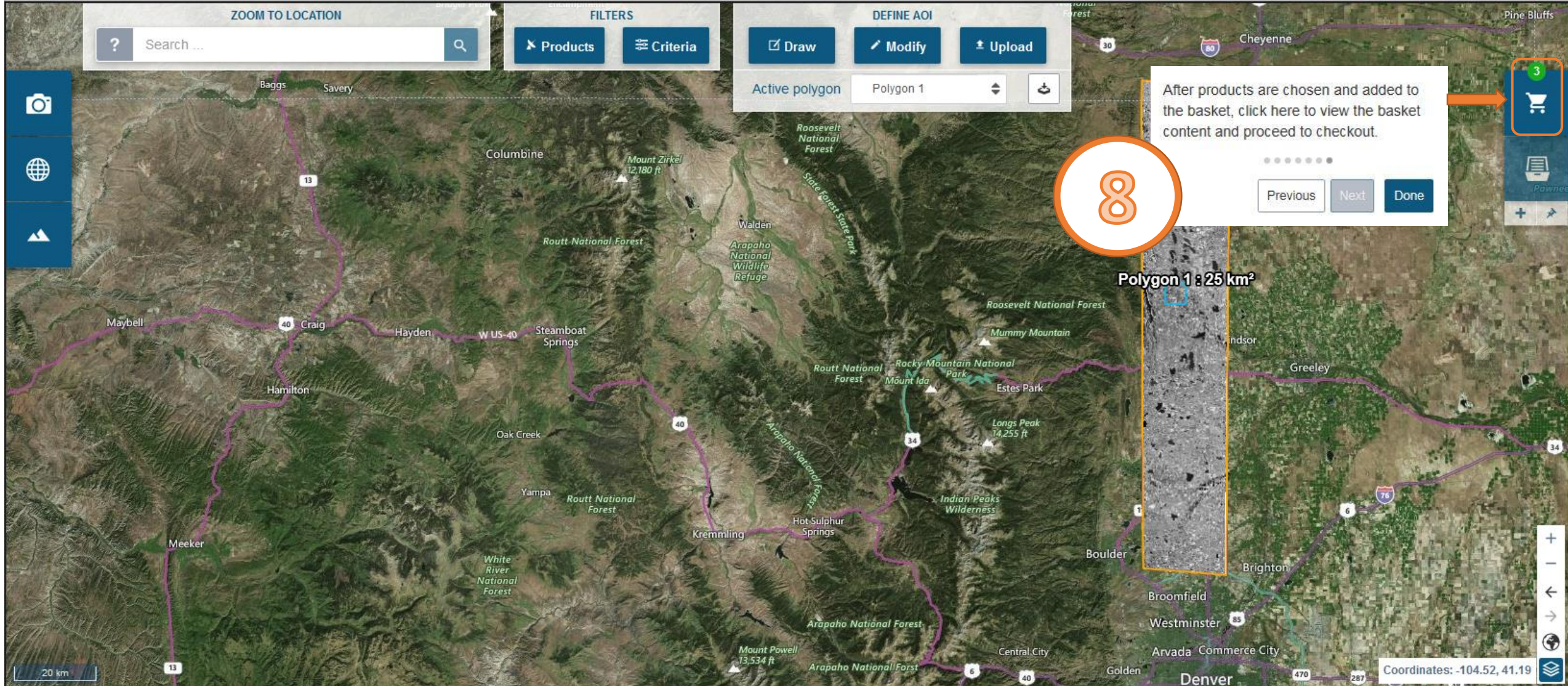
DEFINE AOI  
Draw Modify Upload  
Active polygon Polygon 1

After products are chosen and added to the basket, click here to view the basket content and proceed to checkout.

Previous Next Done



Polygon 1 : 25 km<sup>2</sup>





Back to map

Options

Delivery & Payment

Confirmation

### Checkout

Total cost: ~~\$340.00~~ **\$0.00**

✓ Proceed

9

#### Global Order Options

Delivery mode

FTP

✎ Modify

Modify Delivery method to choose between available types

Pleiades 0.5-m

Price ~~-\$325.00~~ \$0.00 (-100%)

Invoiced Surface: 25 km<sup>2</sup>

Hide details ▲

Geometric Processing

Primary 1A - Panchromatic (Black and White) 50cm

10

Select from Geometric Processing parameters and Product Format, License, Tiling, and Coordinate system options for each product in your cart

Product formats

GeoTIFF

Polygon 1 (25 km<sup>2</sup>)

License

Pleiades End User License Agreement

Coordinate system GCSWGS84

Bit Depth and DRA

8 bit DRA On

DS\_PHR1B\_201702211748376\_FR1\_PX\_W105N40\_0107\_07907

Date Feb 21, 2017 5:48:50 PM

Cloud cover 0%

Incidence Angle 27.682°



✎ Modify

10m NED - National Elevation Dataset

Price ~~-\$15.00~~ \$0.00 (-100%)

Invoiced Surface: 25 km<sup>2</sup>

Hide details ▲

Geometric Processing

Seamless terrain

Product formats

ESRI ASCII Grid

Polygon 1 (25 km<sup>2</sup>)

License

USGS Public Domain

Coordinate system GCSWGS84

Tiling (MB)

Maximum allowed

Resolution 10.2898971m

✎ Modify

11

Proceed to payment screen

# AIRBUS

Total cost: ~~\$340.00~~ **\$0.00**

✓ Proceed

[Back to map](#)

 Options

 Delivery & Payment

 Confirmation

## Checkout

Total cost: ~~\$515.00~~ **\$500.00**

[✓ Proceed >](#)

12

### Please provide a name for this order.

Choose a reference name (such as an internal project number).

My order - Jan 22, 2018

Elect to rename your order and complete the delivery information. Proceed once information has been confirmed.

### Please provide your delivery information.

End user(s) \*

Your Name Here

Address \*

1600 Prospect Park Way

Address (cont.)

City \*

Fort Collins

State / Province

CO

ZIP Code \*

80525

Country \*

United States

### Payment

Purchase order

### Purchase order

Available purchase order(s)

Total cost: ~~\$515.00~~ **\$500.00**

[✓ Proceed >](#)

**AIRBUS**

[Back to map](#)



Options



Delivery & Payment



Confirmation

## Checkout

Total cost: ~~\$15.00~~ **\$0.00**

[Print](#)

### Global Order Options

Order reference	My order - Jan 22, 2018
Delivery mode	FTP
Payment method	N/A
Delivery to	Tracey Bjick is awesome 1600 Prospect Park Way Fort Collins CO 80525 United States tbjick@airbus-na.com

10m NED - National Elevation Dataset

Price ~~+\$5.00~~ \$0.00 (-100%)

Invoiced Surface: 25 km<sup>2</sup>

Geometric Processing

Seamless terrain

Product formats	ESRI ASCII Grid	Polygon 1 (25 km <sup>2</sup> )	
License	USGS Public Domain	Coordinate system	GCSWGS84
Tiling (MB)	Maximum allowed	Resolution	10.2898971m

13

Read the Product License information and accept the terms in order to confirm your final order details.

You may print a copy of the invoice for your records

Product License

10m NED - National Elevation Dataset

USGS Public Domain

[Read](#)

I hereby accept the license(s) of the product(s) selected for this order.

I hereby accept the terms and conditions applicable to this order.

Total cost: ~~\$15.00~~ **\$0.00**

[Print](#)

[Proceed](#)

**AIRBUS**

 [Back to map](#)



Options



Delivery & Payment



Confirmation

Thank you for your request.

Your order has been successfully registered and an order confirmation e-mail will be sent to you.  
Please note that for all quotations requests, our Customer care team will contact you as soon as possible.

Don't forget that you can track your orders online.

Warning: if your order is subject to authorization then it might take additional time.

Great Success! You  
will receive email  
confirmation and  
delivery  
information shortly.

**AIRBUS**